



98-inch Class 4K UHD LCD Display TH-98SQE1W

Product specification (design and specification are subject to change without notice)

DISPLAY PANEL

Screen Size (Diagonal)	98-inch class (2476.9 mm)
Panel type / Backlight	ADS / Direct-LED
Aspect ratio	16:9
Effective Display Area (W x H)	2158.8 x 1214.3 mm (84.99" x 47.80")
Resolution (H x V)	3840 x 2160
Brightness (typ.)	500 cd/m ²
Contrast Ratio	1200:1
Dynamic Contrast Ratio	50000:1
Max. Display Colors	Approx. 1.07 Billion
Response Time (typ.)	8 ms (G to G)
Viewing Angle (Horizontal / Vertical)	178° / 178° (CR>10)
Panel Life Time ¹ (typ.)	Approx. 50000 hours
Panel Surface Treatment	Anti-glare type (Haze 25%)

¹ When the panel lifetime is at 50% of the brightness under the condition of 25 degrees Celsius (+/- 2 degrees Celsius).

CONNECTION TERMINAL

HDMI IN	HDMI Connector x 4	Compatible with HDCP 2.2
DisplayPort 1.2a Input	x 1	Compatible with HDCP 1.3
DisplayPort 1.2a Output	x 1	Compatible with HDCP 1.3
PC IN	Mini D-Sub 15-pin (DDC2B) x 1	RGB : 0.7 V _{p-p} (75 Ω) HD/VD : TTL (High impedance)
SERIAL IN	D-sub 9pin (Female) x 1, RS-232C Compatible	
IR IN	Stereo mini jack (M3) x 1	
AUDIO IN	Pin jack (L / R) x 1	
AUDIO OUT	Stereo mini Jack (M3) x 1 SPDIF x 1	
LAN	RJ45 x 1	
USB	USB connector Type-A (5 V/0.5 A) x 2, Type-C (5 V/1.5 A) x 1 (Internal) Type-A x 1	
SLOT	Intel [®] SDM specification Corresponding size SDM-S / SDM-L, Supply power 40 W	
Wi-Fi	Dongle	

AUDIO

Built in Speaker	24 W [12W + 12W]
------------------	------------------

ELECTRICAL

Power Requirements	AC 110 - 127 V 50 Hz / 60 Hz AC 220 - 240 V 50 Hz / 60 Hz
Power Consumption	703 W (No slot 650 W)
On Mode Average Power Consumption ¹	611 W
Power Off Condition	0 W
Stand-by Condition	Approx. 0.5 W
Apparent power	703 W (No slot 650 W)

¹ Based on IEC 62087 Ed.2 measurement method

MECHANICAL

Dimension (W x H x D) Not including remote controller sensor box	2216 x 1271 x 99 mm (87.25" x 50.02" x 3.87")
Dimension (W x H x D) Including remote controller sensor box	2216 x 1288 x 99 mm (87.25" x 50.67" x 3.87")
Weight	99.8 kg (220.1 lbs)
Carton Dimensions (W x H x D)	2435 x 1684 x 387 mm (95.87" x 66.30" x 15.24")
Gross Weight	150 kg (330.7 lbs)
Cabinet Material	Front/Side/Back: Metal
Bezel Color	Black
Bezel Width	T/R/L/B 28.2 mm (1.11")
Pitch for Wall-Hanging	VESA Compliant 800 x 400 mm (31.5" x 15.8") (Installed by: M8 screws / Screw hole depth 12mm (0.48"))

¹ Remote IR sensor is detachable.

INSTALLATION

Orientation ¹	Landscape / Portrait
Tilting Angle	Landscape : 20 degrees forward Portrait : 20 degrees forward

¹ Please contact your sales representative with regard to the tilt angle before installation.

ENVIRONMENTAL

Operating Environment	Temperature : 0°C to 40°C (32°F to 104°F) ¹ ; 0°C to 35°C (32°F to 95°F) ²
	Humidity : 20% to 80% (No condensation)
Storage Environment	Temperature : -20°C to 60°C (-4°F to 140°F)
	Humidity : 20% to 80% (No condensation)

¹ : for up to 1400 m (4593 ft) altitude ² : for between 1400 m (4593 ft) and 2800 m (9186 ft) altitude

· Depending on the temperature or humidity conditions, uneven brightness may be observed. This is not a malfunction.

· This unevenness will disappear while applying current continuously. If not, consult the distributor.

UPC Code	885170428010
----------	--------------

MAIN FEATURE

Wireless Display	Yes
USB Media Player	Yes
Data Cloning	USB
Multi display settings	Yes
Power on Screen Delay	Yes
Auto setting	Yes
No signal power off	Yes
HDMI power management (HDMI-Wakeup)	Yes
Button lock	Yes
Operation level control	Yes
Set up timer	Yes
SERIAL control (RS232C)	Yes
LAN control	Yes
HDMI CEC Compatible	Yes
Crestron Connected™	Yes
SNMP	Yes
PJLink™	Yes
Multi Monitoring & Control Software	Yes
Memory Viewer	Yes
HTML5 Browser	Yes
HTML5 Browser auto-Launch	Yes
Real Time Clock	Yes
Pixel shift	Yes
OSD Rotation	Yes
USB Auto-play (Type A&C)	Yes
Operating Time ¹	24h / day

¹ Displaying a still image for a long time may cause burn-in (image persistence artifacts), it could be mitigated when display video image.

INCLUDED ACCESSORIES

- Remote Control x 1 - IR Sensor x 1 - IR Sensor Holder
- Screw (for IR Sensor's Holder) x 2 - Power Supply Code
- Batteries x 2: AA/R6/LR6 type - Cable Clamper x 3
- Wi-Fi dongle x 1 - Extension Cable (for Wi-Fi dongle) x 1

STANDARD (CERTIFICATIONS)

SAFETY REGULATIONS	EU/USA CB Report (LVD; IEC62368-1 2nd Edition + EU/USA Deviation) EU Deviation : EN62368-1:2014 2nd Edition USA Deviation : UL62368-1-2014, 2nd Edition UL Certification
RADIATION REGULATIONS	EU : EMC test report [Class-A] (CE; EN55032:2012/EN61000-3-2:2014/EN61000-3-3:2013/EN55024:2010 IEC61000-4-2:2008 IEC61000-4-3:2010 IEC61000-4-4:2012 IEC61000-4-5:2005 IEC61000-4-6:2013 IEC61000-4-8:2009 IEC61000-4-11:2004) US : FCC [Class-A]

WIRELESS LAN FUNCTION

Compliance standard	IEEE 802.11 a/b/g/n Dual (Wireless LAN Standard protocol) Wi-Fi CERTIFIED
Channel	IEEE802.11a/b/g/n
Communication distance	Approx. 30 m (Depends on usage environment)

REMOTE CONTROL TRANSMITTER

Power Requirements	DC 3 V (AA Size batteries x 2)
Operating distance	Approx. 7 m (22.9 ft) ¹
Weight	Approx. 111 g (4 oz) including batteries
Dimensions (W x H x D)	51 x 161 x 27 mm (2" x 6.4" x 1.1")

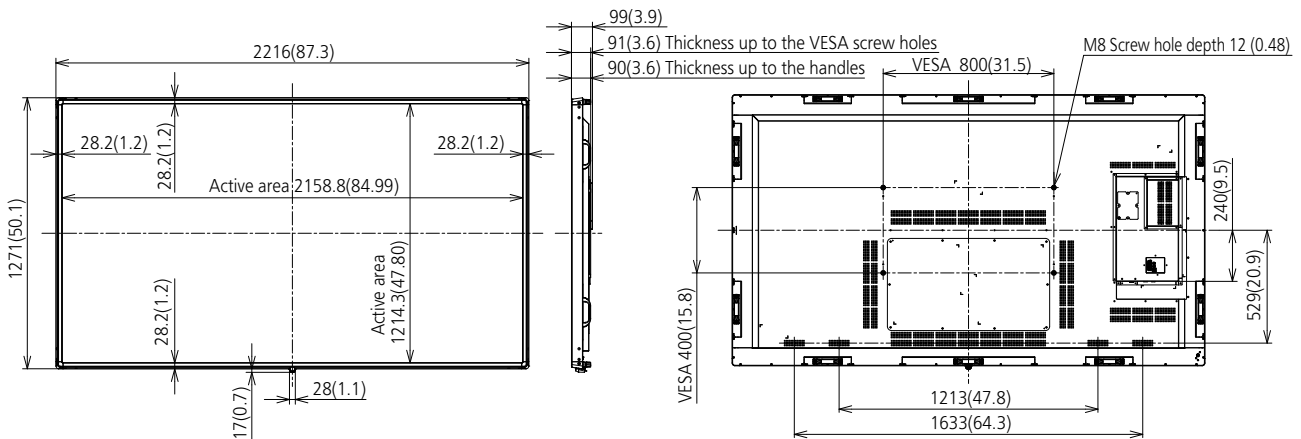
¹ When operated directly in front of the IR sensor.

OPTIONAL ACCESSORIES

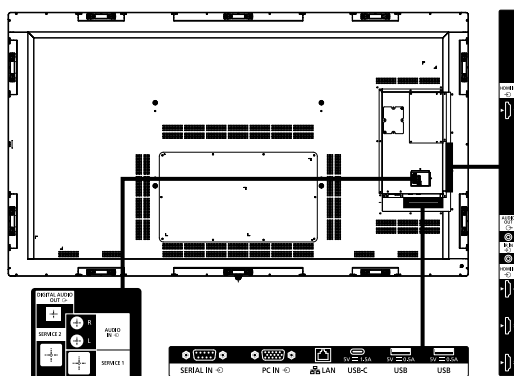
Early Warning Software ¹ Basic license / 3-year license	ET-SWA 100 / 105series (Depending on the license type, the symbol at the end of the part number is different.)
Wireless Presentation System	Receiver Board TY-SB01WP

DIMENSIONS

Cautions: This drawing is not a scale
Units : mm (inches)



CONNECTION TERMINAL



¹ Specifications and appearance are subject to change without notice.

Corresponding Signal	Resolution (Dot)	Scanning frequency		Dot Clock frequency (MHz)	Format ²	Plug and Play supported signal			
		Horizontal (kHz)	Vertical (Hz)			HDMI	DP ³	Type-C	PC
1600 x 900/60	1600 x 900	55.92	60	119	H/DP/TypeC	-	-	-	-
1600 x 1200/60	1600 x 1200	75	60	162	H/DP/TypeC/PC	-	-	-	○
1680 x 1050/60	1680 x 1050	65.29	59.95	146.25	H/DP/TypeC	-	-	-	-
1920 x 1080/60	1920 x 1080	66.59	59.93	138.5	H/DP/TypeC	-	-	-	-
1920 x 1080/60	1920 x 1080	67.5	60	148.5	H/DP/TypeC/PC	○	○	○	○
1920 x 1200/60	1920 x 1200	74.04	59.95	154	H/DP/TypeC/PC	○	○	○	○

1: Pixel-Repetition signal (dot clock frequency 27.0 MHz) only

2: Following characters are abbreviation of input terminals.

H : HDMI (HDMI 1, 2, 3, 4)
 DP : Display Port
 Type-C : USB Type-C
 PC : D-sub RGB

3: Only for SQE1W

4: Signals with ○ in the Plug and Play-supported signal column are the ones written in EDID (Extended Display Identification Data) of this unit.

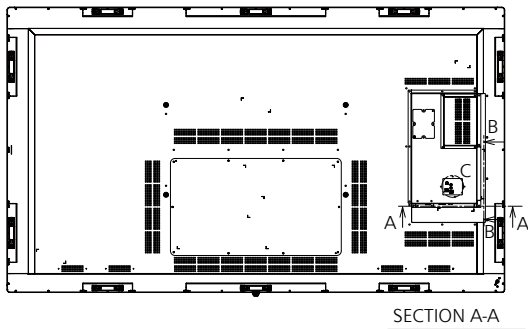
For signals without ○ in the Plug and Play-supported signal column, resolutions may not be selected on the PC side even if this unit supports those signals.

Note

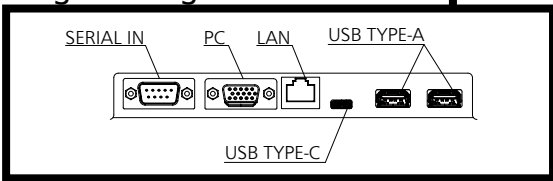
- An auto detected signal format may be differently displayed from the actual input signal.
- The i symbols (example 1080i) means Interlaced signal.

● Terminals

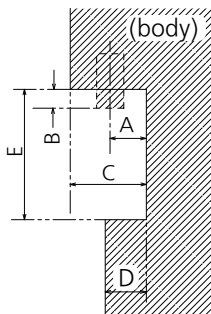
View from back



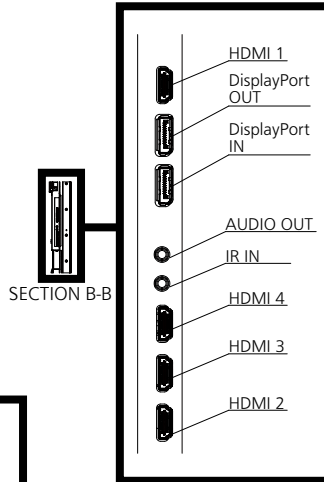
Magnified figure of terminal a



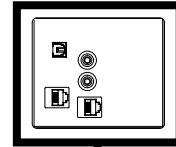
Sectional view of terminal a
(SERIAL IN / PC / LAN / USB TYPE-C / USB TYPE-A)



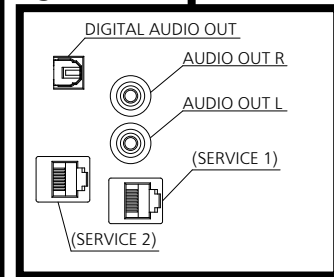
Magnified figure of terminal b



DETAIL C



Magnified figure of C

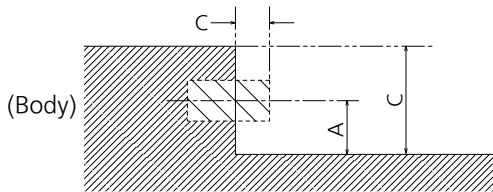


Terminal a
98SQE1W Terminal (Bottom)

Units : mm (inch)

	SERIAL IN	PC	LAN	USB TYPE-C	USB TYPE-A
A	12.7 (0.50)	12.7 (0.50)	12.9 (0.50)	8.0 (0.31)	10.5 (0.41)
B	4.3 (0.17)	4.4 (0.17)	-	-	-
C	34.5 (1.35)				
D	28.6 (1.12)				
E	86.5 (3.40)				

Sectional view of terminal b
(HDMI / DisplayPort / IR / AUDIO OUT)



Terminal b
98SQE1W Terminal (Side)

Units : mm (inch)

	HDMI	DisplayPort	IR / AUDIO OUT
A	9.8 (0.39)	9.8 (0.39)	10.9 (0.43)
B	-	-	1.0 (0.04)
C	34.5 (1.35)		

1 Since clearance between terminals are limited, some USB connector will not fit.
Please check if USB memory devices you are going to use will fit, using the diagram above.