



CASE STUDY

## FUTURE WORLD at ArtScience Museum

Stellar picture quality from Panasonic projectors created a fully immersive digital art gallery

**Client:** ArtScience Museum

Location: Marina Bay Sands, Singapore

Product(s) supplied:

PT-DZ780

PT-EZ580

**Challenge**

**Solution**

## FUTURE WORLD at ArtScience Museum

ArtScience Museum's new permanent exhibition, "FUTURE WORLD: Where Art Meets Science", was launched to mark the fifth anniversary of the museum. Panasonic was honoured to be the "Official Projection Partner" bringing digital art installations to life through cutting-edge technology.



### Why Choose Panasonic?

- Flexible sales support and technical support.
- A wide projector line-up supports a variety of installation conditions.
- Superb picture quality and faithful colour reproduction achieved dynamic projection without loss of quality.

## Explore a fully immersive 1500-square-metre digital art gallery

ArtScience Museum at Marina Bay Sands finally unveiled Singapore's largest interactive digital playground, "FUTURE WORLD: Where Art Meets Science". For its landmark permanent exhibition, the museum collaborated with a globally renowned Japanese group of ultra-technologists and the multi-award winning art collective, teamLab.

The art collective has built Singapore's largest digital playground spanning 1,500 square metres, which is approximately a quarter of the museum's total gallery space. The immersive and interactive exhibition made the audience feel like it was an indispensable part of the artworks on display, as the installations dynamically evolved through their presence and participation.

### Flowers and People, Cannot be Controlled but Live Together - A Whole Year per Year

The adventure begins with a stroll through a field of luminous flowers and butterflies that seems to go on forever. Depending on where visitors stand, the flowers either blossom or fade away, recreating nature's endless cycle of growth and decay.

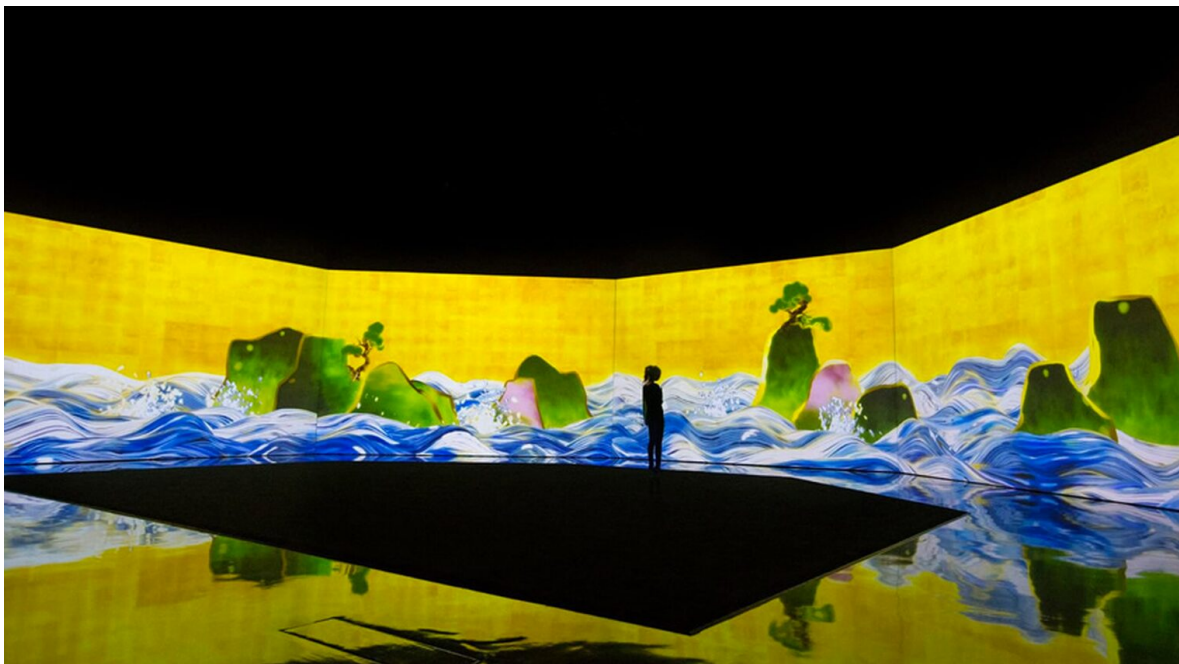
To create this stunning virtual environment, twelve PT-EZ580 LCD projectors and four TH-55LFV70 video wall displays were used. Featuring high brightness and superb image quality, the PT-EZ580 units provided dazzling and dreamy images over the walls on four sides and the floor.



## 100 Years Sea Animation Diorama

This larger-than-life installation gave a glimpse into the future, as it illustrated the rising sea levels wrought by climate change, based on scientific data derived from the World Wildlife Foundation (WWF).

Five PT-EZ580 units succeeded in creating a highly realistic diorama that created the illusion of eventually being swallowed by the rising sea.



## Sketch Town

This project was designed to engage children in learning through play. By scanning two-dimensional paper drawings of buildings and vehicles that the visitors coloured, their drawings were transformed into 3D animated objects on the screen.

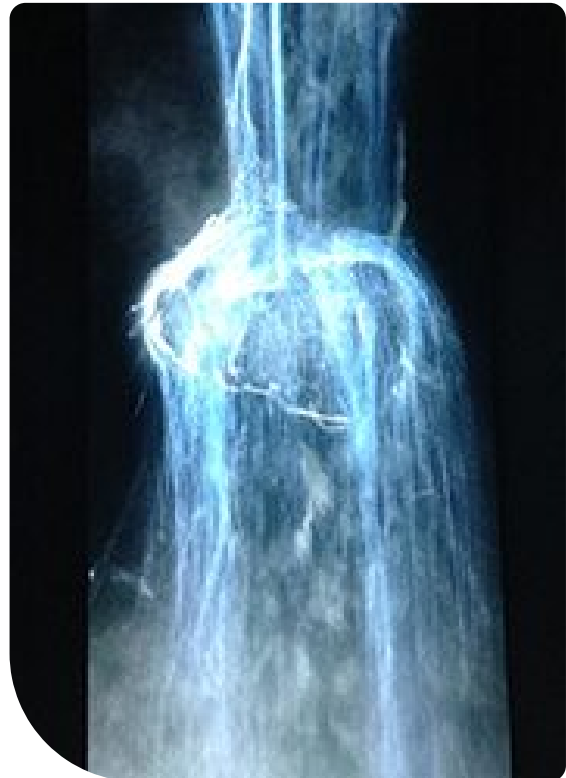
In this installation, Panasonic PT-EZ580 LCD projectors were used again. Three PT-EZ580 projectors delivered vivid images without any loss of image quality.



## Universe of Water Particles

Discover the exhibition's spectacular centrepiece, the Universe of Water Particles, a seven-metre-tall virtual waterfall. Hundreds of thousands of water particles cascaded down the facade of a virtually sculpted rock, with each particle of 'water' digitally programmed and generated to flow according to the laws of physics.

Five PT-DZ780 1-Chip DLP? projectors supported digital art duplicating the grandeur of nature. Outstanding image quality from PT-DZ780 units gave visitors explosive thrills. And Geometry Manager Pro Software (ET-UK20) and the Auto Screen Adjustment Upgrade Kit (ET-CUK10) made it possible to achieve this outstanding image quality.





## Sketch Aquarium

A favourite among children of all ages, this immersive installation featured a digitally rendered aquatic world where two-dimensional sea creatures that visitors drew on paper came to life in a virtual ocean. Three PT-EZ580 LCD projectors provided dynamic images for this exciting artwork.

## Story of the Time When Gods Were Everywhere

In this digitally projected world, visitors could create their own environment by touching hieroglyphic characters, which then transformed into natural elements such as wind, rain, trees and mountains.

Beautiful images created by three PT-EZ580 LCD projectors drew visitors into an enthralling story and promised to deliver a unique experience that could never be replicated.



## "i Light Marina Bay 2016" Coincided with "FUTURE WORLD"

The large-scale projection mapping project, "*i Light Marina Bay 2016*", was also held in conjunction with "FUTURE WORLD", both of which were based on a partnership with teamLab. Panasonic projectors were selected to support those projects and delivered superior performance.

